



**American Association
*of Colleges of Nursing***



**Leadership for Academic
Nursing Program**

**Directory of Fellows
2014-2015**

2014-15 LEADERSHIP FOR ACADEMIC NURSING PROGRAM DIRECTORY

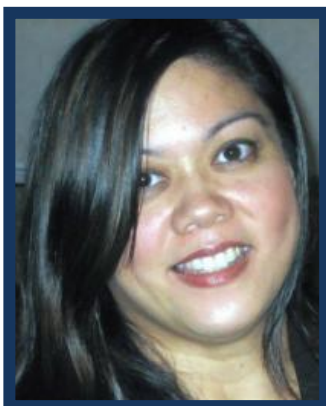
In 2001, the Helene Fuld Health Trust awarded an academic leadership grant to the American Association of Colleges of Nursing in order to develop an executive leadership institute for new and aspiring deans. After four grant funded classes of fellows, the program was redesigned and became self-sustaining in 2006, but retained the rigorous and competitive selection process and the excellent leader development activities characterized by the first four years.

This professional development experience includes assessment and evaluation of leadership skills, identification of particular approaches that enhance leadership success, identification of key partnerships and strategic networking, and consultation to achieve long-term goals. In response to the increasing seniority of nursing academic leaders, this program was designed to prepare a more diverse, younger pool of deans/directors and other senior leaders for nursing higher education programs.

In July 2014, the 2014-15 Fellows attended a five-day workshop in Annapolis, MD, where they participated in intensive classes and exercises related to successful academic leadership. The fellowship year also includes opportunities for Fellows to apply concepts and strategies from their professional development activities, confer with colleagues in the fellowship, and engage in a mentorship opportunity with an experienced nursing academic executive, working to accomplish specific, individualized leader development goals.

This directory highlights the 2014-15 Fellows. Representing a variety of backgrounds, experiences, and abilities, these Fellows have enhanced their skill as academic leaders, and have the necessary tools to serve even more competently and confidently as leaders in academic nursing.

LEADERSHIP FOR ACADEMIC NURSING PROGRAM DIRECTORY



Cynthia Ayres, PhD, RN

Associate Professor

School of Nursing

Rutgers University -Camden

311 North Fifth Street,

Armitage Hall 4th Floor

Camden, NJ 08102

(609) 529-4362

cgayres@camden.rutgers.edu

Dr. Ayres is a tenured Associate Professor at Rutgers, The State University of New Jersey, School of Nursing, Camden. She holds a PhD and MS from Rutgers College of Nursing-Newark, with a focus in child and adolescent health. She also received her BS from Rutgers College of Nursing-Newark. She has over 15 years of experience teaching in undergraduate and graduate nursing programs. The foundation of her work as a research scientist centers on health promotion and disease prevention activities in adolescents and young adults. She investigates the factors that influence the delivery of clinical preventive services among health care practitioners as well as the factors that influence the health practices of adolescents and young adults. She is a member of the Editorial Board for the *Journal of Nursing Practice Applications & Reviews of Nursing Research* and the *Journal of Interprofessional Healthcare* and serves on peer review panels for the *Journal of Health Care for the Poor and Underserved*, the *American Journal of Managed Care*, and other publications. She has published in a number of peer reviewed journals and has presented at numerous national and international research conferences. In addition, she is member of the NJ Comprehensive Cancer Control Plan Evaluation Committee, and served on several state advisory committees for the NJ Commission on Cancer, including the Nursing Advisory Committee. She is also a Fellow in the National Academies of Practice.



Mary Bantell, EdD, RN
Director/Chair and Associate Professor
Department of Nursing
Plymouth State University
17 High Street, MSC 17
Plymouth, NH 03264
(603) 535-2100
mbantell@plymouth.edu

Dr. Bantell is an Associate Professor and the Director and Chair of the Nursing Department at Plymouth State University. As Director, she provides administrative oversight for the traditional and RN-BSN programs. Dr. Bantell earned her MS degree from Wilkes University and her EdD from Teachers College, Columbia University. She has 24 years of experience in nursing education at the baccalaureate and graduate level. Her clinical specialty areas include medical/surgical, critical care, and emergency department nursing.

In her role as Director of the new nursing programs, Dr. Bantell has led the Department to attain successful State, Regional, and National accreditations. She has received research funding for her work in developing innovative educational pathways for nurse educators. Dr. Bantell is an active member on local and state nursing education committees.



Jacklyn Barber, EdD, MSN, RN
Interim Dean of Adult and Graduate Nursing Studies & Professor
Department of Nursing
Morningside College
1501 Morningside Avenue
Sioux City, IA 51106
(712) 274-5297
barber@morningside.edu

Jacklyn R. Barber is a full professor and Interim Dean of Adult and Graduate Nursing Studies at Morningside College. She received her master's in science degree from Creighton University and her Doctorate in education/health professions from College of Saint Mary. She demonstrates expertise in medical-surgical, oncology, infusion therapy, and community health. She continues to manage patients in the practice of home infusion. Jacklyn has a wealth of experience as a nurse educator. She teaches at the baccalaureate level. Currently she provides continuing education and consultation for faculty, staff nurses, managers, and allied health professionals in leadership and management, team building, infusion therapy and many other role development and Medical-Surgical concepts. Her area of focus centers on the concept of community assessment and implementation of health promotion, prevention,

and protection strategies. She authored “*Nursing Students’ Perception of Spiritual Awareness after Participating in a Spirituality Project*” and co-authored “*Growth Patterns of Overweight Preschool Children in the Siouxland WIC Program*”. She was responsible for designing and implementing the Adult and Graduate Nursing Studies program along with the Krone First-Year Advising Center at Morningside College. She was the recipient of the Lucille and Charles Wert Faculty Excellence Award in 2014, the Sharon Walker Faculty Excellence in Teaching Award in 2006 and 2012, and the ODK Faculty Person of the Year Award in 2005 and 2013.



Margaret Barton-Burke, PhD, RN, FAAN
*Mary Ann Lee Endowed Professor of Oncology
Nursing and Associate Professor
College of Nursing
University of Missouri-St. Louis
One University Blvd.
St. Louis, MO 63108
(314) 516-7068
bartonburkem@umsl.edu*

Dr. Barton-Burke is the Inaugural Mary Ann Lee Endowed Professor of Oncology Nursing at the University of Missouri-St. Louis and a Research Scientist at the Siteman Cancer Center, St. Louis, MO. Dr. Barton-Burke retired from the Massachusetts Army National Guard as Deputy Commander of Detachment 6 at the rank of Colonel, the first female and first nurse to hold the rank of Colonel. Her research is in the area of culture and health disparities focusing specifically on black women breast cancer survivors. With a focus on cancer survivorship and health disparities finding that black women who are diagnosed with, treated for, and survive breast cancer have a different experience and health-related quality of life than their white counterparts. Current research focuses on culturally-appropriate interventions, outreach, and programs for the community of color. This research in the U.S. led to becoming inaugural faculty for a methodology workshop for the African Doctoral Dissertation Research Fellowship (ADDRF) Awards sponsored by the African Population and Health Research Centre (APHRC) and the International Development Research Centre (IDRC), Nairobi, Kenya. The fellowship program is intended to build research capacity in sub-Saharan Africa. More than 155 ADDR Fellows have completed this fellowship since its inception in 2008.



Claudia Beckmann, PhD, APN

Associate Dean, Graduate and Professional Programs School of Nursing & Associate Professor Rutgers University-Camden
419 Cooper Street, Room 202
Camden, NJ 08102
(856) 225-6226
cbeckman@camden.rutgers.edu

Claudia Anderson Beckmann is associate professor and associate dean for graduate and professional programs at Rutgers University School of Nursing-Camden. She has a BSN and an MN (maternal child health) from the University of Kansas School of nursing and has a PhD in nursing from the University of Texas at Austin. She also has post master's certificates in women's health and nurse midwifery. Prior to coming to the School of Nursing-Camden she was the specialty director of the Women's Health Nurse Practitioner program in the College of Nursing Rutgers University Newark. She has taught nursing from the baccalaureate degree to the PhD. Recently the first class of DNP students was admitted to the School of Nursing-Camden under Dr. Beckmann's leadership. Her research interests include the role of intimidation on patient safety and quality and improving health care to underrepresented populations. She has previously conducted studies looking at improving perinatal health outcomes. The focus of the DNP program in the School of Nursing-Camden is civic engagement and Dr. Beckmann and others in the School of Nursing are establishing nurse managed clinics within the Camden community.



Jennifer Bellot, PhD, RN, MHSA

Director, DNP Program Jefferson School of Nursing Thomas Jefferson University
901 Walnut Street, Suite 813
Philadelphia, PA 19107
(215) 503-8104
jennifer.bellot@jefferson.edu

Jennifer Bellot, PhD, RN, MHSA, is Associate Professor of Nursing and Director of the DNP Program at Thomas Jefferson University in Philadelphia, PA. Jennifer received her bachelor's degree in nursing and master's in health services administration (public health) at the University of Michigan. She earned a PhD in nursing at the University of Pennsylvania, studying culture change initiatives in nursing homes and their effect on nursing staff.

In her first job as a staff nurse in a nursing home, Dr. Bellot noted the intense interplay of health policy and care provision in this highly regulated environment. Her passion for policy and health equity was further ignited. Today, Dr. Bellot combines her commitment to quality geriatric care, Medicare and health policy and nursing leadership

by using mixed methods to explore nurse managed care of the frail elderly in a non-acute setting. Dr. Bellot is presently a Robert Wood Johnson Foundation Nurse Faculty Scholar, analyzing the population of Medicare beneficiaries served by Nurse Managed Centers.

Dr. Bellot thoroughly enjoys teaching graduate-level nursing students, focusing on research methods, population health and health policy. She continues to practice, providing care services to young children with cerebral palsy and pervasive developmental delays.



Lisa Broussard, DNS, RN, CNE

*Nursing Department Head and Associate to the Dean
College of Nursing & Allied Health Professions
The University of Louisiana at Lafayette
P.O. Box 43810
Lafayette, LA 70504
(337) 280-8826
LisaBroussard@louisiana.edu*

Dr. Broussard received her BSN from University of Southwestern Louisiana in 1985. In 1991, she received a Master's in Nursing from Louisiana State University Medical Center as a Clinical Nurse Specialist with a focus on parent child nursing. In 2006, Dr. Broussard was awarded the Doctor of Nursing Science degree from Louisiana State University Health Sciences Center, with a concentration area of teaching and curriculum. Dr. Lisa Broussard has been a faculty member in the UL Lafayette College of Nursing and Allied Health Professions for the past 22 years. She worked as an undergraduate pediatric clinical instructor and master teacher in the pediatrics course from 1992 until 2005. From 2005-2011, she served as course coordinator for the maternal child undergraduate nursing course. In this role, Dr. Broussard designed a state-of-the-art maternal child simulation lab, working closely with maternal child faculty to develop appropriate scenarios. In 2011, she was appointed as Department Head, and in this role she oversees the day to day operation of the department which includes approximately 1800 undergraduate (prelicensure and RN to BSN), master's (nurse practitioner, nurse executive, and nurse educator) and doctoral (DNP) students, as well as 43 full time and 6 part time faculty, eight professional staff, and three administrative assistants. Additionally, Dr. Broussard is actively involved in teaching at the master's level and curricular development for the DNP program.



Cathleen Colleran-Santos, DNP, RN

*Associate Professor & RN-BS Program Coordinator
Division of Nursing
Curry College
1071 Blue Hill Avenue
Milton, MA 02186
(617) 333-2021
csantos0706@curry.edu*

Dr. Santos [BSN, Husson College (1990), MSN, University of Massachusetts, Dartmouth (2000), DNP, Regis College (2010)] is an associate professor and coordinator of the RN-BS Program at Curry College in Milton, MA.

In addition to coordinating the RN-BS program she maintains her role as course coordinator for the Community Health Nursing courses. Dr. Santos currently teaches in the undergraduate and graduate programs. She has held various leadership positions in nursing administration before coming to academia.

In addition to her faculty role at Curry College, Dr. Santos is a contributing faculty in the MSN and DNP programs at Walden University. Dr. Santos is a member of the board of directors for the American Nurses Association-Massachusetts and co-chair of the Health Policy committee. She has served as a Project team member of the Quality and Safety in Nursing Education (QSEN) Collaborative at Curry College (2007- 2010) and is a 2009 Health Information Technology Scholars program (HITS) Faculty Scholar.

Her areas of research include student nurse perceptions of patient safety and innovative teaching methods. Her manuscript "Innovative Teaching Method in Emergency Response Education of Undergraduate Nursing Students" has been accepted for publication in the Journal of Nursing Education.



Linda Comer, PhD, RN, CNE, LPC

*Executive Associate Director
School of Nursing
Western Carolina University
28 Schenck Parkway
Asheville, NC 28803
(336) 686-2891
lcomer@wcu.edu*

Dr. Comer Executive Associate Director of the School of Nursing at Western Carolina University, Cullowhee, NC. Dr. Comer provides administrative leadership for the faculty and staff in the School of Nursing. She participates in the allocation and continuous improvement of human, financial and other resources needed to accomplish the goals and objectives of the Baccalaureate, Masters and Doctorate of Nursing Practice programs. Dr. Comer previously served as Interim Associate Dean for the College of Health and Human Sciences, and Associate Director for Graduate Nursing Programs. Dr. Comer was formerly an assistant professor at North Carolina Agricultural and Technical State

University.

Dr. Comer received her PhD in Curricular Foundations of Education, MSN in nursing education, and MS in Community Counseling degrees from The University of North Carolina at Greensboro. She received her BSN from North Carolina Agricultural and Technical State University. Her research includes nurse faculty teams and nursing education scholarship of teaching and learning.

Dr. Comer is a Board Member of the North Carolina Foundation for Nursing, and a member of the North Carolina Nurses Association, the American Nurses Association, the North Carolina Organization of Nurse Leaders and Sigma Theta Tau International Nursing Honor Society.



Patricia Dillon, PhD, RN

*Director, Graduate Nursing and RN-BSN/MSN
Bridge Program and Associate Professor
School of Nursing and Health Sciences
La Salle University
1900 West Olney Avenue
Philadelphia, PA 19141
(215) 951-1322
dillonp@lasalle.edu*

Dr. Pat Dillon is an Associate Professor and Director of the Graduate Nursing, RN to BSN/MSN Bridge Programs at La Salle University, Philadelphia, Pennsylvania. Her administrative responsibilities include oversight of 10 graduate nursing tracks, the RN to BSN and RN to MSN Bridge programs. Her administrative experience also includes developing and coordinating second-degree programs and clinical management positions. She received her Ph. D. in Nursing from Widener University. She has been in nursing education for more than 30 years, teaching both undergraduate and graduate nursing students. She has received the Lindback Award for teaching excellence. She has authored texts on health assessment and simulation. She is currently working on her 3rd edition of her health assessment text.

Dr. Dillon still maintains a clinical practice in acute care. She received the Veterans Health Administration Inter-Professional Fellowship in Patient Safety Using Simulation, 7/2009 -2011. Her inter-professional work using simulation was awarded the Veterans Administration Nursing Excellence in Patient-Centered Care 2012 Office of Nursing Services Innovations Award. Her original research interest focused on the effects of clinical experience on students' cognitive, competence and confidence development. This area has expanded to include the use of simulation and interprofessional education.



Denise Drevdahl, PhD, RN

*Professor
Nursing Program
University of Washington-Tacoma
Campus Box 358421
1900 Commerce Street
Tacoma, WA 98402
(253) 692-5671
drevdahl@uw.edu*

Dr. Drevdahl is a Professor and Graduate Program Coordinator at the University of Washington Tacoma Nursing Program. She began her nursing career with a diploma degree from Rockford Memorial Hospital, Rockford, Illinois, followed by her BSN from Metropolitan State College, Denver, Colorado. Her MSN is from the University of Colorado Health Sciences, and PhD from the University of Washington Seattle. She has worked in a variety of clinical settings including Post Anesthesia Care Units, the Operating Room, for a physician in private practice, and in community clinics. Her areas of interest include public/community health nursing, health inequities, and clinical decision making. With nearly 20 years of experience in nursing education at the baccalaureate, RN-BSN, and master's levels, she has taught numerous courses including those on critical thinking, community health assessment, medical ethics, diversity, social justice, environmental justice, and global health. She reviews for *Nursing Research*, *Public Health Nursing*, *Nursing Inquiry*, and *Qualitative Health Research*. Dr. Drevdahl is a member of the American Public Health Association (Public Health Nursing section) and the Association of Community Health Nurse Educators.



Brenda Dyal, DNP, FNP-BC

*Assistant Dean
College of Nursing and Health Sciences
Valdosta State University
1500 North Patterson Street
Valdosta, GA 31698
(229) 333-5959
bsdyal@valdosta.edu*

Dr. Dyal is the Assistant Dean of Nursing in the School of Nursing at Valdosta State University, and has served as the Graduate Programs Coordinator. Dr. Dyal has 7 years teaching and administrative experience in the delivery of baccalaureate and graduate nursing programs. She earned a Bachelor's degree from Valdosta State University, a Master's degree from Florida State University and the DNP from the University of Florida. She is certified as a Family Nurse Practitioner with a part-time primary care practice at a free clinic serving the working uninsured population of Lowndes County Georgia. Areas of interest include faculty practice and the implementation of evidence into the practice setting as well as the inclusion of the principles of evidence-based practice into the academic setting. Dr. Dyal was in the inaugural cohort of the Sigma Theta Tau/Elsevier

Nurse Faculty Mentored Leadership Development Program 2010-2011, where together with her faculty mentors she completed a project titled “Faculty Practice: A model for partnership and leadership”. She is currently involved with the development of a faculty practice group at the Valdosta State University College of Nursing and Health Sciences. She is serving in the final year of a two year commitment as President of Epsilon Pi Chapter Sigma Theta Tau; she has membership in NONPF and AANP.



Shawn Elliot, DNP, RN, CPNP-PC

Director of Nursing & Assistant Professor

Nursing Department

Adams State University

208 Edgemont Boulevard, Suite 2250

Alamosa, CO 81101

(719) 587-8134

selliott@adams.edu

I have been a nurse for 25 years! I grew up in a family of nurses and my passion grew when I worked as a Certified Nurse’s Aide in high school. I received my BSN degree from William Jewell College in 1989 and quickly realized I wanted to advance my degree. I received my MSN as a Pediatric Clinical Nurse Specialist in 1993 from UMKC. I then worked for many years in many different capacities ranging from bedside nurse to Advance Practice/Management. My family moved to rural CO 8 years ago & I quickly learned I needed to be an NP to be an asset to the community so returned to school, Colorado University, to get my PNP/DNP which I finished in 2012. I have been at Adams State University since 2006 and have served in the Director role for 1 year now. I have also been married for 25 years now, have 2 children, & 2 grandchildren.



Lorna Finnegan, PhD, RN

Associate Professor & Interim Department Head,

Health Systems Science

College of Nursing

University of Illinois at Chicago

845 South Damen, Room 1046, MC 802

Chicago, IL 60612

(312) 996-1668

lornaf@uic.edu

Dr. Finnegan is an Associate Professor and Department Head of Health Systems Science, College of Nursing, University of Illinois at Chicago (UIC). She began her nursing career with a diploma in nursing from Little Company of Mary Hospital and obtained her BS, MS, and PhD in Nursing degrees from UIC. She has over 25 years of experience in various faculty positions. During the early years of her faculty career, she developed and led a family nurse practitioner program and several faculty practice initiatives. She is currently on the Board of Directors of the National Organization of Nurse Practitioner Faculties. Dr.

Finnegan's program of research focuses on symptom clusters in chronically ill adults. In her recently completed NIH-funded study of adult survivors of childhood cancers, she developed symptom cluster experience profiles that included unique configurations of symptoms and risk and protective factors that will be used to develop targeted, subgroup-specific symptom management interventions.



Catherine Gannon Tagher, EdD, RN, MSN, APRN

BSN Program Director & Assistant Professor

Department of Nursing

Northern Kentucky University

330 Albright Health Center

Highland Heights, KY 41099

(859) 572-5555

tagherc1@nku.edu

Dr. Gannon Tagher is currently the director of the BSN program and an Assistant Professor of Nursing at Northern Kentucky University. She received both her BSN and MSN degrees from the University of Kentucky and is licensed as a pediatric nurse practitioner. Her clinical work has been in pediatric hematology/oncology at both the University of Kentucky and Cincinnati Children's Hospital Medical Center (CCHMC), developmental disabilities at CCHMC, and pediatric primary care. Dr. Tagher's doctoral work was completed at Northern Kentucky University earning an Ed.D. in Educational Leadership with a focus in nursing education. Her research focus is student's perceptions of stress in a high stakes testing environment as well as helping students to view standardized testing as a challenge rather than a threat. She has presented her research at both national and international conferences. Dr. Tagher participated in the 2013-2014 Higher Education Collaborative Women's Institute for Leadership Development, a collaboration of colleges and universities in the greater Cincinnati area. In addition to teaching, Dr. Tagher is the nursing site manager for the NKU Nurse Advocacy Center for The Underserved Healthy Mother/Baby House for women with newborns recovering from drug addiction.



Kim Goldinger, MSN, RN, FNP-C

Instructor

Division of Nursing

Martin Methodist College

433 West Madison Street

Pulaski, TN 38478

(931) 424-7371

kgoldinger@martinmethodist.edu

Kim Goldinger is an Instructor, Division of Nursing, at Martin Methodist College, in Pulaski, TN. She teaches traditional and LPN-BSN students in lecture and clinical settings. She also serves as a Family Nurse Practitioner to the college health clinic, where she was the lead NP in start-up of the

clinic in 2013. She received her MSN and Family Nurse Practitioner (FNP) from the University of Alabama at Birmingham in 2009 (December); her MSN in Nursing Administration from the University of Alabama in Huntsville in 1999; as well as her BSN from UAH in 1976. She became a certified Family Nurse Practitioner in 2010 and worked in a family, primary care clinic. She is currently enrolled in the Doctorate of Nursing Practice program at the University of Alabama at Birmingham and is expected to earn her degree in December, 2014. Her scholarly project focuses on motivating college students to get influenza immunization.

She has worked as a FNP in a family medical clinic, as a geriatric FNP, Home Health Nurse Administrator, and practiced clinically in many settings. She served as the Director of Clinical Services for Home Health Services for Baptist Health System, which consisted of seven Home Health agencies through-out central and north Alabama, serving the ten hospital system. She is an active member of Sigma Theta Tau International, the American Association of Nurse Practitioners, and the North Alabama Nurse Practitioner Association. She is currently in the process of chartering a chapter for Sigma Theta Tau International for Martin Methodist College School of Nursing.



Katie Hughes, MS, RN

*Chair, Undergraduate Nursing & Assistant Professor
School of Nursing and Health Professions*

Marian University - Main Campus

45 South National Avenue

Fond du Lac, WI 54935

(920) 923-8732

kmhughes65@marianuniversity.edu

Ms. Hughes is an Assistant Professor and Chairperson of the Undergraduate Pre-licensure Nursing Program at Marian University in Fond du Lac, WI. She earned her BSN from the University of Wisconsin-Oshkosh in 2000 and her Master of Science degree in Nursing Education with a clinical focus in Psychiatric Mental Health Nursing from the University of Wisconsin-Madison in 2006. Ms. Hughes began her nursing career at a state-run psychiatric hospital and soon after began working as an adjunct clinical instructor. In 2005 Ms. Hughes began working at Marian University as the Academic Advisor for nursing students and also pioneered the role of Clinical Site Coordinator for the nursing programs. During that time she developed and refined policies and procedures for clinical placements and developed strong relationships with clinical agencies across the state. Since beginning her role as the pre-licensure nursing program chairperson in 2012, Ms. Hughes has led the development and implementation of a concept-based nursing curriculum, including re-envisioning and broadening clinical practice experiences for students, and served as co-chair for the nursing programs reaffirmation of accreditation and site evaluation visit in Spring 2014 with CCNE. In addition to her expanding leadership role at Marian University, Ms. Hughes also serves as Co-Chair of the Fox Valley Health Care Alliance, a group of individuals representing higher education and practice environments committed to providing quality education and workforce pool, in the Fox Valley region of Wisconsin. Ms. Hughes is presently pursuing her Doctorate of

Nursing Practice in Executive Leadership at Concordia University Wisconsin.



Mary Jessee, MSN, RN
Prespecialty Level Director & Assistant Professor
School of Nursing
Vanderbilt University
461 21st Avenue South
Nashville, TN 37240
(615) 481-5256
Mary.A.Jessee@vanderbilt.edu

Mary Ann Jessee is assistant professor and director of the Prespecialty Level of the Master of Science in Nursing Program at Vanderbilt University School of Nursing (VUSN). She has 11 years of education experience and 3 years administration experience at VUSN as well as an extensive background in medical/surgical and critical care nursing. Mary Ann earned her MSN at Vanderbilt University in Nashville, TN and is currently a PhD candidate at Oregon Health and Science University. Her expertise includes facilitating student development of sound clinical reasoning skill through innovative learning experiences in the clinical learning environment. She strives to foster student development of the knowledge, skill, and attitudes necessary to navigate complex patient situations in the current healthcare environment. She led a curricular revision to rightly focus VUSN's pre-licensure curriculum on cultivating in students a spirit of inquiry that will serve to support the lifelong learning essential for continued delivery of evidence-based, progressive, patient-focused nursing care. Mary Ann has been awarded several VUSN awards for excellence in teaching and scholarliness. She is a member of and has received research funding from Sigma Theta Tau International Honor Society of Nursing. She has published and presented at local, regional, and national levels.



Wrenetha Julion, PhD, MPH, RN, FAAN
Professor
College of Nursing
Rush University Medical Center
600 South Paulina Street
Armour Academic Center
Suite 1055B
Chicago, IL 60612
(312) 942-6272
wrenetha_a_julion@rush.edu

Dr. Julion received her BSN from Southern Illinois University, Edwardsville in 1980; dual MSN/MPH from the University of Illinois in Chicago in 1996; and PhD from Rush University College of Nursing in 2002. Over the past 34 years, Dr. Julion's focused clinically on the care of Women, Children and Families and critically ill neonates, before transitioning to research and academia. She is

co-author of the *Chicago Parent Program*, a nationally recognized parent training program for at-risk families living in low-income, ethnic minority communities. Dr. Julion has been funded by the NIH-NINR to develop the *Building Bridges to Fatherhood* (BBTF) program, a fatherhood intervention designed to promote the positive and sustained involvement of African American fathers in their children's lives, when their children live in a separate household. She is a member of the second cohort (2012-2014) of *Macy Faculty Scholars*, awarded from the Josiah Macy Jr. Foundation. Her project is focused on promoting cultural competency among interprofessional students by engaging them in service learning in diverse Chicago communities. Dr. Julion is prior recipient of the Robert Wood Johnson Foundation *New Connections Initiative*. She has reviewed grants for the National Institute of Mental Health (NIMH) and National Institute of Nursing Research and reviewed manuscripts for Public Health Nursing (PHN), American Journal of Public Health (AJPH) and Research in Nursing and Health (RINAH). She has mentored PhD, DNP and pre-licensure students and has a strong history of scholarly productivity in the form of journal articles, poster and podium presentations.



Kimberly Kelly-Cortez, PhD, RN-BC

*Assistant Director, Nursing
College of Health Professions
Western Governors University, Texas
4001 South 700 East, Suite 700
Salt Lake City, UT 84107
(385) 428-6290
Kim.Kelly-Cortez@wgu.edu*

Dr. Kelly-Cortez is the Assistant Director of Nursing at Western Governors University, Texas. As assistant Director of Nursing her current duties include academic and administrative oversight for the prelicensure nursing program in the state of Texas. She received her BA (history and education) from Texas A&M University and her MEd (education and Administration) from the University of Houston Clear Lake. She worked in the public school system for ten years, five of which as Dean of Students at an urban middle and high school. She then earned her BSN and PhD in nursing from the University of Texas Medical Branch and is certified in nursing professional development by the ANCC. Dr. Kelly-Cortez's dissertation focused on the effect of human patient simulation on the perceived self-efficacy of medial surgical nurses in managing cardiac emergencies. Her research continues to focus on the use of simulation in both the academic and hospital setting. Her experience in nursing includes emergency care, nursing education, nursing leadership, and as undergraduate nursing faculty. She is a member of the Texas Organization of Nurse Executives, American Nurses Association, Texas Nurses Association, and the Texas Organization of Baccalaureate and Graduate Nursing Education.

Margaret Levvis, PhD, RN, MA, MSN

Chair



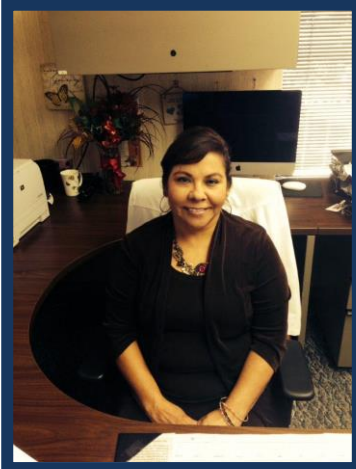
*Department of Nursing
Central Connecticut State University
324 Barnard Hall, 1615 Stanley Street
New Britain, CT 06050
(860) 832-0184
levvism@ccsu.edu*

Dr. Meg Levvis received her BA from Assumption College and her MA from Boston College. She received her Ph.D. in Philosophy and Bioethics from the University of Tennessee, interning at various hospitals in Knoxville and Memphis as well as at Yale. She has taught at various academic institutions including Clemson, Louisiana State University, and Central Connecticut State University before going on to the University of Connecticut where she received both her RN and MSN degrees. She has taught both bioethics and nursing courses during the last twenty years. Dr. Levvis is currently the Chairperson and Associate Professor of the Nursing Department at Central Connecticut State University.



Pamela Lindsey, DNSc, RN
*Director & Associate Professor
School of Nursing
Millikin University
1184 West Main Street, LTSC 101
Decatur, IL 62522
(217) 424-5055
plindsey@millikin.edu*

Dr. Lindsey is Associate Professor and Director of the School of Nursing at Millikin University. Prior to her four-year tenure at Millikin University, she served for six years as the Undergraduate Program Director of the Mennonite College of Nursing at Illinois State University. Dr. Lindsey has been engaged in nursing education for over 19 years with experience teaching undergraduate, graduate, and doctoral level courses. Her clinical expertise is in psychiatric and mental health nursing. In 2007 she was awarded a two year Claire M. Fagin Postdoctoral Fellowship from the Building Academic Geriatric Nursing Capacity (BAGNC) program which was supported by the John A. Hartford Foundation and the Atlantic Philanthropies. Her research has focused on psychiatric nurses' clinical decision making related to the management of behavior disturbances in older adults with dementia utilizing pharmacologic and nonpharmacologic interventions. Her scholarly activities have been published and presented at local, state, and national professional conferences. She is a member of Sigma Theta Tau and The American Psychiatric Nurses' Association.



Irene Lugo, DNP, RN

*Undergraduate Programs Director
Gayle Greve Hunt School of Nursing
Texas Tech University Health Sciences Center
415 East Yandell Drive
El Paso, TX 79902
(915) 355- 5998
irene.lugo@ttuhsc.edu*

Dr. Irene Lugo is currently an assistant professor and undergraduate programs director at the Texas Tech Gayle Greve Hunt School of Nursing in El Paso, Texas. She received her BSN and MSN from the University of Texas at El Paso, and DNP from Walden University. The focus of her Doctorate of Nursing project was Educating Staff Nurses on Fall Prevention Strategies in Hospice Austin Patients: Knowledge Enhancement. She has been involved in online and distance education, curriculum design, implementation and evaluation at the ADN and BSN levels. Her clinical expertise includes NICU, PICU and pediatric experience. She is a member of Sigma Theta Tau, Texas Team and the National Association of Hispanic Nurses. Her vision is to improve nursing by building interdisciplinary teams through the use of simulation. She has presented nationally on the Three C's of Successful Simulation: Collaboration, Communication and Confidence. She is currently working at integrating hospital directors into the educational setting. Her vision is to incorporate the local hospital clinicians to actively participate in the curriculum and learning process of these future nurses. These nurses will be better utilized by the hospitals as the clinicians have contributed to their professional development.



Filomela (Phyllis) Marshall, EdD, RN, CNE

*Dean
W. Cary Edwards School of Nursing
Thomas Edison State College
101 West State Street
Trenton, NJ 08608
(609) 633-6460
pmarshall@tesc.edu*

Dr. Phyllis Marshall has more than 30 years of experience in the healthcare field primarily in nursing education. Her area of clinical specialty is community/public health nursing. Her academic expertise is in curriculum development. She has also partnered and received grants to work with community organizations to prepare and place nurses in non-traditional roles in the community. Dr. Marshall has a wide range of experience in baccalaureate and master's degree nursing education. Starting on July 2, 2012, she was appointed the dean of the W. Cary Edwards School of Nursing where she oversees the education of more than 2,500 nursing students. Dr. Marshall holds a doctorate in education from Temple University in Philadelphia; a

Master of Science in Community Health Nursing from the University of Pennsylvania in Philadelphia; and a Bachelor of Science in Nursing from Herbert H. Lehman College (CUNY) in New York.



Paula McCauley, DNP, APRN, ACNP-BC

*Associate Dean
School of Nursing
University of Connecticut
Augustus Storrs Hall,
231 Glenbrook Road
Storrs, CT 06269
(860) 486-6004
Paula.McCauley@uconn.edu*

Paula McCauley is currently the Associate Dean for Academic Affairs at the University of Connecticut and Acute Care Track Coordinator. A “triple Husky” with three nursing degrees, BS MS and DNP from UCONN. Position in nursing education for the past ten years teaching acute and critical care for the accelerated prelicensure program, and graduate courses in theory and acute care for the master’s and DNP programs. The past six years include program coordinator for the acute care nurse practitioner program and two years as the coordinator of all of UConn’s master’s programs. Nursing experience spans thirty plus years and includes practice as an APRN and staff nurse in critical care, ED and pediatrics as well as the position as trauma program director for two level two trauma facilities. Publications and presentations focus on hospital acquired infections, chronic lung disease, and the DNP as faculty member. Active membership includes ANA, Connecticut Nurses Association, Sigma Theta Tau, NONPF, chair of the AACN Practice Leadership Network Communications committee. member of the steering committee for the Connecticut Nursing Collaborative, chair of the Connecticut League for Nursing Dean’s and Directors committee and newly elected member of the Board of Directors for the American Association of Critical Care Nurses.



Connie Miller, PhD, RN, CNE

*Interim Assistant Dean
College of Nursing
University of Nebraska Medical Center
985330 Nebraska Medical Center
Omaha, NE 68198
(402) 559-2208
clmiller@unmc.edu*

Dr. Miller is an associate professor and Director of the Learning Resource Center at the University of Nebraska Medical Center (UNMC) College of Nursing. She will serve as Interim Assistant Dean, Omaha Division, effective July 1, 2014. Dr. Miller earned her MSN with an adult critical care focus and her PhD in nursing from the University of Nebraska Medical Center. She received her BSN from

Pittsburg (KS) State University. She has 20 years of experience in nursing education at the baccalaureate and master's levels and holds NLN certification as a nurse educator. She has received teaching awards from UNMC and the March of Dimes. Her scholarship is focused on high fidelity simulation, interprofessional education, and patient safety. She has presented on these topics at local, regional and national conferences. She has received funding for the development and evaluation of e-learning modules for clinical education and for implementation of the dedicated education unit clinical teaching model. She is immediate past president of the UNMC Faculty Senate. She has held leadership positions in Sigma Theta Tau at the local and regional levels. She is also an active member of the International Nursing Association for Clinical Simulation & Learning and Simulation in Healthcare.



Carolyn Montoya, PhD, RN, CPNP

Interim Chair, Practice Team

College of Nursing

University of New Mexico

MSC09 5350

1 University of New Mexico

Albuquerque, NM 87131

(505) 272-8875

cjmontoya@salud.unm.edu

Dr. Carolyn Montoya, Associate Professor, is currently the Interim Chair of the Practice Team and coordinator of the Pediatric Nurse Practitioner Concentration at the University of New Mexico, College of Nursing. Ms. Montoya received her bachelor's degree from the College of Nursing at UNM, her master's degree from Yale University, and her PhD from the University of New Mexico as a fellow of the Robert Wood Johnson Foundation Nursing and Health Policy Collaborative. She continues to maintain a clinical practice at Pediatric Health Services in Albuquerque, N.M. Dr. Montoya served as President of the American College of Nurse Practitioner from 2001-2002 and as President of the National Association of Pediatric Nurse Practitioners from 2007-2008. In 2014 was selected as a Fellow of the American Association of Nurse Practitioners and she received the Western Institute of Nursing Carol A. Lindeman Award for a New Researcher for her study, "Children's Self-Perceptions of Weight in a Rural Hispanic Community". Dr. Montoya continues to be involved in child health care policy as well as policy issues related to scope of practice for advanced practice nursing.



James Pace, PhD, MDiv, ANP-BC, FAANP, FAAN

Associate Dean, Undergraduate Programs

College of Nursing

New York University

726 Broadway, 10th Floor, Room 1093

New York, NY 10003

(615) 268-1631

jcp12@nyu.edu

James Pace is the Associate Dean of the Undergraduate Program at New York University College of Nursing and Clinical Associate Professor of Nursing. Dr. Pace holds a BA in philosophy from The University of the South at Sewanee, Tennessee; a BSN from Florida State University; MSN and MDiv degrees from Vanderbilt University; and a PhD in Nursing from the University of Alabama at Birmingham. Dr. Pace is a board certified adult nurse practitioner and a Fellow in both the American Academy of Nurse Practitioners and the American Academy of Nursing. Dr. Pace's part-time clinical practice is at the Callen-Lorde Community Health Clinic in New York City. Dr. Pace's research and scholarly pursuits are in the areas of palliative/end-of-life care and spirituality/religion and health. Dr. Pace is also an Episcopal priest and assists at the Church of St. Mary the Virgin, Times Square.



Chris-Tenna Perkins, PhD, RN, MS, ANP, CNE

Associate Professor & Associate Dean

College of Nursing

Bon Secours Memorial

8550 Magellan Parkway, Suite 1100

Richmond, VA 23227

(804) 627-5352

Chris-Tenna_Perkins@bshsi.org

Dr. Chris-Tenna Perkins is the Associate Dean of Nursing at Bon Secours Memorial College of Nursing. She holds a PhD in Nursing Education from University of Northern Colorado (2014), a Master of Science degree in Nursing from Virginia Commonwealth University (2000), and an Associate (1996) and Bachelor (1998) of Science degrees in nursing from Bluefield State College. She is certified as a nurse educator (CNE) since 2008 and primary adult nurse practitioner (ANP) since 2000. Dr. Perkins has a clinical background in medical-surgical nursing and as a nurse practitioner in cardiology. For the last 12 years she has had a variety of teaching experiences as a faculty member in foundations, health assessment, and adult medical surgical nursing. In addition, she has chaired the curriculum, faculty development, and admission and progression committees, as well as, administrative positions as adult nursing curriculum coordinator and pre-licensure coordinator. She has experiences with creation, implementation, and evaluation of pre-licensure and post-licensure BSN curricula. Her expertise is in curriculum development and evaluation, medical-surgical nursing, faculty

development, program improvement, and partnership science. Her research interests are in academic-practice partnerships focusing on the process of partnership functioning and the creation of partnership synergy.



Chiarina Piazza, PhD(c), MEd, BSN

*Associate Dean
College of Nursing
West Coast University
151 Innovation Drive
Irvine, CA 92617
(949) 398-2350
cpiazza@westcoastuniversity.edu*

Ms. Piazza is currently the Associate Dean, College of Nursing at West Coast University. She received her BS in Nursing at the University of California, Los Angeles, her MEd at Cambridge College, and is a PhD Candidate (dissertation phase) at the University of San Diego. The focus of her dissertation is the social and emotional experiences of school age children with life threatening peanut allergy. Ms. Piazza's position with West Coast University has evolved. Prior to her position as Associate Dean, she was also the Campus Dean of Nursing and a faculty member at the Orange County Campus. She has supported the West Coast University Oxford Honors Program for the last 4 years as an administrator abroad. Her past experience includes School Nursing, Pediatric Intensive Care, and Adult Med/Surg. She is a member of Sigma Theta Tau International and the Association of California Nurse Leaders.



Susan Rugari, PhD, RN, CNS

*Interim Department Head & Associate Professor
Department of Nursing
Tarleton State University
201 St. Felix Street
Stephenville, TX 76401
(254) 968-0536
rugari@tarleton.edu*

Dr. Rugari is an Associate Professor and the Interim Department Head of Nursing at Tarleton State University in Stephenville, Texas. She is also the Director of the Graduate Nursing Program. Dr. Rugari's educational background includes a PhD in nursing from Texas Woman's University in Denton, Texas; MSN from the University of Texas at Arlington in Arlington, Texas; and BSN from Stephen F. Austin State University in Nacogdoches, Texas. Her practice background included care of medical-surgical patients, people with diabetes, and liver and kidney transplant recipients. In the 25 years Dr. Rugari has been in academia, she taught face-to-face, online, and hybrid classes to generic BSN, RN and LVN to BSN, master's, and Doctor of Nursing Practice (DNP) students. Early in her nursing career, Dr. Rugari's scholarship focused on the psychosocial aspects of liver

transplant recipients. In the last 10 years, her research focus shifted to studying Equine-Assisted Activities and Therapies (EAAP). She is a member of Sigma Theta Tau International and the Professional Association of Therapeutic Horsemanship International (PATH Intl.) where she currently serves as the Chair of the Health & Education Advisory Committee. Dr. Rugari is a published author and has presented at local, regional, national, and international locations.



Maura Schlairet, EdD, RN, MA, MSN, CNL

*Associate Professor
College of Nursing
Valdosta State University
Health Sciences and Business Administration Building
1500 North Patterson Street
Valdosta, GA 31698
(229) 333-7192
mcschlai@valdosta.edu*

Maura C. Schlairet is an Associate Professor of Nursing and Bioethicist. She received her MA degree in bioethics and healthcare policy from the Loyola University of Chicago. Dr. Schlairet is a core faculty member of Valdosta State University's College of Nursing and Health Sciences and teaches graduate level courses in research and statistics and undergraduate level courses in research, gerontology, and fundamental concepts of professional nursing practice. She serves as a faculty mentor, advising junior faculty on research methodology and pedagogic practices, and chairs both program evaluation and promotion and tenure committees at the college level. Dr. Schlairet has a well-established record of scholarship and peer-reviewed publication and is currently conducting research on end of life care communication and moral distress among nurses, cognitive load associated with human patient simulation, flipped classroom teaching methods, and program level evaluation of simulation pedagogy. She was very recently recognized with the VSU Faculty Excellence Award for the Scholarship of Teaching and Learning and has been nominated for the Regents' Teaching Excellence Award.



Donna Scott-Tilley, PhD, RN, CNE, CA-SANE

*Interim Associate Dean & Professor
College of Nursing
Texas Woman's University
Box 425298, 1216 Oakland Street
Denton, Texas 76204
(940) 898-2425
dtilley@twu.edu*

Donna Scott Tilley is a Professor and Interim Associate Dean at Texas Woman's University (TWU) College of Nursing, Denton campus. Her BSN and MSN were completed at Texas Tech University Health Sciences Center School of Nursing. She completed her

PhD at University of Texas Health Science Center at San Antonio. She has been at TWU since 2008. She teaches primarily in the PhD program. Her research focuses on intimate partner violence. She practices as a Sexual Assault Nurse Examiner in Ft. Worth, Texas.



Amy Silva-Smith, PhD, RN, ANP-BC

*Associate Professor
Beth-El College of Nursing and Health Sciences
University of Colorado, Colorado Springs
1420 Austin Bluffs Parkway
Colorado Springs, CO 80918
(719) 255-4490
asilvasm@uccs.edu*

Dr. Amy Silva-Smith is an associate professor at the University of Colorado, Colorado Springs. She is currently the department chairperson for nursing at Beth-El College of Nursing and Health Sciences. Dr. Silva-Smith earned her MSN from the University of Wisconsin-Madison and her Ph.D. in Nursing from the University of Wisconsin-Milwaukee. She served as a nurse practitioner option coordinator and the practicum coordinator prior to serving as department chair. Dr. Silva-Smith's research focuses on interventions to reduce stroke and cardiovascular disease risk in adults. In 2009-2011, Dr. Silva-Smith was awarded a John A. Hartford Foundation/Claire M. Fagin Postdoctoral Research Fellowship during which she conducted a randomized study of a wellness motivation to promote healthy eating and physical activity in older adults at risk for stroke. Currently, she is a member of an interprofessional research team that has developed an integrated wellness program at the Lane Center for Academic Health Sciences. Dr. Silva-Smith's clinical practice as an adult/gerontological nurse practitioner spans over 20 years.



Barbara Sorbello, PhD, RN-BC, NEA-BC

*Dean
College of Nursing
Bon Secours Memorial
8550 Magellan Parkway, Suite 1100
Richmond, VA 23227
(804) 627-5344
Barbara_Sorbello@bshsi.org*

Dr. Sorbello joined the Bon Secours Memorial College of Nursing as Dean on March 10, 2014. She previously served as the Administrative Director for Professional Development and Retention, Magnet and Pathway to Excellence Program Director for Bon Secours St. Francis Medical Center (SFMC).

Prior to this position, she served as the Administrative Director for Acute Care Services at SFMC.

Prior to relocating to Virginia, Dr. Sorbello served as full time faculty member/research associate and Co-Project Director for the Clinical Nurse Leader Master's Program at the Christine E. Lynn College of Nursing at Florida Atlantic University. Prior to her faculty position she practiced in nursing administrative positions in acute care hospital settings from 1980-2006.

Dr. Sorbello received a BSN from Hunter College Bellevue School of Nursing in New York; an MSN in Nursing Administration and PhD in Nursing from the Christine E. Lynn College of Nursing at Florida Atlantic University.

Clinical expertise and national certifications from the American Nursing Credentialing Center (ANCC) are in Medical Surgical Nursing and Nursing Executive/Advanced. Research interests are in nursing leadership, leadership development, care delivery systems, patient safety and outcomes, and implementation of the Clinical Nurse Leader role competencies.



Jeanne-Marie Stacciarini, PhD, RN

*Associate Professor
College of Nursing
University of Florida
1225 Center Drive room 4207
Gainesville, FL 32610
(352) 273-6499
jeannems@ufl.edu*

Dr. Stacciarini is an associate professor at the College of Nursing at the University of Florida. She is a very enthusiastic and committed researcher; her research focuses on identifying methods to address social determinants of mental health in underserved and minority populations. Dr. Stacciarini has collaborated with faculty from Mexico and Brazil on studies to understand the promotoras' (lay-health workers) role in the mental health field. Her ethnic background, coupled with her knowledge of Latino culture, has provided Stacciarini with the expertise to publish and present research in English, Portuguese, and Spanish. This has contributed to her ability to collaborate with international faculty to promote global, scholarly advancement in nursing. She has received several awards for her research with underserved population; including the SNRS award for research in minority health (2012), the APNA research excellence (2014) and the UF Research Foundation Professorship (2014). Dr. Stacciarini is also recognized as an outstanding advisor/mentor (particularly minority students), teaching internationally and creating international opportunities for students. Her passion for diversity and inclusion is reflected in her aspiration to an executive position in academia, which she will use to create an inclusive academic environment for diverse students.



Susan Stillwell, DNP, RN, CNE, ANEF, FAAN

Associate Professor & Associate Dean, Graduate Programs
School of Nursing
University of Portland
5000 North Willamette Boulevard
Portland, OR 97203
(503) 943-7356
stillwel@up.edu

Susan B. Stillwell is Associate Professor and Associate Dean of Graduate Programs at the School of Nursing at the University of Portland. Prior to joining the University of Portland, she was Associate Director of the Center for the Advancement of Evidence-based Practice at Arizona State University, College of Nursing and Health Innovation. Dr. Stillwell received her Doctor of Nursing Practice degree from Samford University, Birmingham, Alabama, her Masters of Science in Nursing from the University of Florida, Gainesville, and her Bachelors of Science from the College of Saint Teresa, Winona Minnesota. She is a Fellow in the National League for Nursing Academy of Nursing Education and in the American Academy of Nursing. Dr. Stillwell's areas of inquiry include evidence-based practice and nursing education. She is an expert EBP Mentor and has published and presented on the topic of evidence-based practice nationally and internationally. She is a member of Sigma Theta Tau International, the National League for Nursing and the American Nurses Association. Dr. Stillwell is a certified nurse educator and serves on the editorial board of Nurse Educator.



Kenneth Tillman, PhD, RN

Director, Undergraduate Programs
College of Nursing
East Tennessee State University
807 University Parkway, Box 70676
Johnston City, TN 37614
(225) 802-2645
tillmank@etsu.edu

Dr. Tillman is Director of Undergraduate Programs at East Tennessee State University College of Nursing. He has 14 years of experience in nursing education at the baccalaureate and graduate level. Dr. Tillman earned his BSN from the University of South Alabama (1984), his MSN from the University of Texas Health Science Center at Houston (1989), and his PhD from Louisiana State University (2006). Prior to his career in nursing education Dr. Tillman held various administrative positions in hospitals and home health care agencies. Dr. Tillman has received various awards and recognition for excellence in teaching and research. Areas of interest for his teaching and research include leadership and management, community health, care of marginalized groups, men in nursing, and men's health issues. Dr. Tillman is currently serving as the

Board Chair of AAneurysm Outreach, a national nonprofit organization focused on promoting increased awareness of abdominal aortic aneurysm disease and screening exams of individuals at risk for developing the disease. Dr. Tillman is a member of the American Nurses Association, the American Assembly for Men in Nursing, and Sigma Theta Tau International Honor Society of Nursing.



Gayle Timmerman, PhD, RN, CNS, FAAN
Associate Dean for Academic Affairs School of Nursing
The University of Texas at Austin
1710 Red River Street
Austin, TX 78701
(512) 471-9087
gtimmerman@mail.utexas.edu

Gayle M. Timmerman is Associate Dean for Academic Affairs and Associate Professor at The University of Texas at Austin School of Nursing. Her program of research focuses on eating patterns that influence weight and weight management in women. She seeks to develop theory-based, individualized interventions to achieve long-term weight loss and prevention of weight gain. Her work has received national and international press with more than 450 citations in various media and publications (including National Public Radio, cbsnews.com, CNN.com, webmd.com). Her recent work tested a successful weight gain prevention intervention, Mindful Restaurant Eating, which focused on helping individuals who eat out regularly prevent weight gain. She also mentors undergraduate and graduate students in research and teaches courses pertaining to health promotion and behavior change. As the Project Director for a HRSA grant focused on enhancing the education of Clinical Nurse Specialists, she is invested in further integrating interprofessional education into the curriculum to provide comprehensive team-based health care. She also is a Fellow of the American Academy of Nursing.